



# Perfect for R&D

Software for laser machines



DMC handles all the steps of the process, from path generation to machine control.



**Simplify** your laser machine control.

DMC is flexible, open and hardware independent. It saves time and enables the user to perform complex processes easier. Use it for applications from 2D to 5D, either subtractive or additive, involving multiple tools and intricate setups.

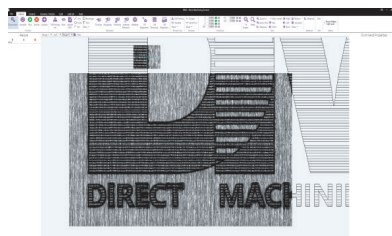
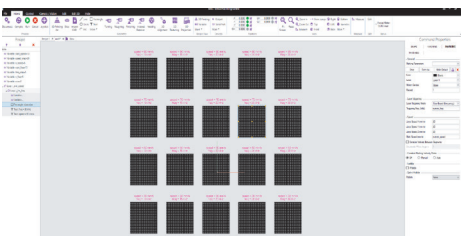
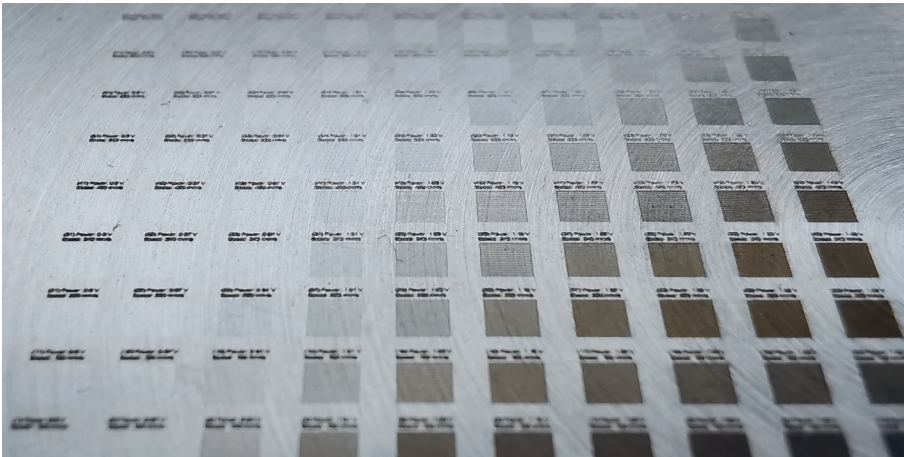
**“Provides a powerful, easily customisable integrated solution”**

“Over the years we have used a variety of software solutions, both commercial and in-house, for the control of our R&D laser processing systems at the National Centre for Laser Applications. However recently we have transferred our systems, where possible, to DMC as it provides a powerful, easily customisable integrated solution for control of lasers, motion, and accessories. We find that the combination of a graphical interface with parametric type programming is very beneficial for research projects.”

**ALAN CONNEELY**  
Centre Manager  
National Centre for Laser Applications  
National University of Ireland Galway

## Key features

- Fast preparation for laser machining. Prepare hundreds of objects with different marking parameters in minutes.
- Integrated machine vision tools for precise machining on existing features and workflow automation.
- Creation of complex recipes without any G/M-code programming knowledge.
- Stage, galvo, laser and sensor integration for precise machining of complex shapes on difficult surfaces.
- Quick machine calibration for F-theta lens, galvo scanner, camera, laser power or stages.
- One interface to control a variety of setups with different hardware.



## Supported hardware list

### GALVO SCANNERS

- Raylase SP-ICE
- Cambridge ScanMaster
- Canon
- Smart Move
- SCANLAB RTC with XLScan
- Others

### CAMERAS

- IDS Imaging uEye
- Basler
- Mightex
- Hikvision
- GigE Vision
- Others

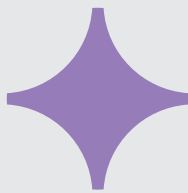
### MOTION CONTROLLERS

- Newport XPS
- Polaris Motion Control
- ACS Motion Control
- Aerotech A3200/Automation1
- Zaber
- Delta TAU
- Others

### OTHER DEVICES

- SLM and DLP
- Laser sources
- Power meters
- Displacement sensors
- Custom tools

\*Support for additional hardware can be added on request (typically 1-2 weeks)



## Try demo!

[directmachining.com/demo](http://directmachining.com/demo)

\*Trial version includes all the features of the software



### LET'S TALK

[info@directmachining.com](mailto:info@directmachining.com)



### FIND US

Direct Machining Control  
Mokslininkų g. 2A  
08412, Vilnius  
Lithuania

### SEE OUR WORK

[www.directmachining.com](http://www.directmachining.com)  
[@DirectMachiningControl](https://www.instagram.com/DirectMachiningControl)

