

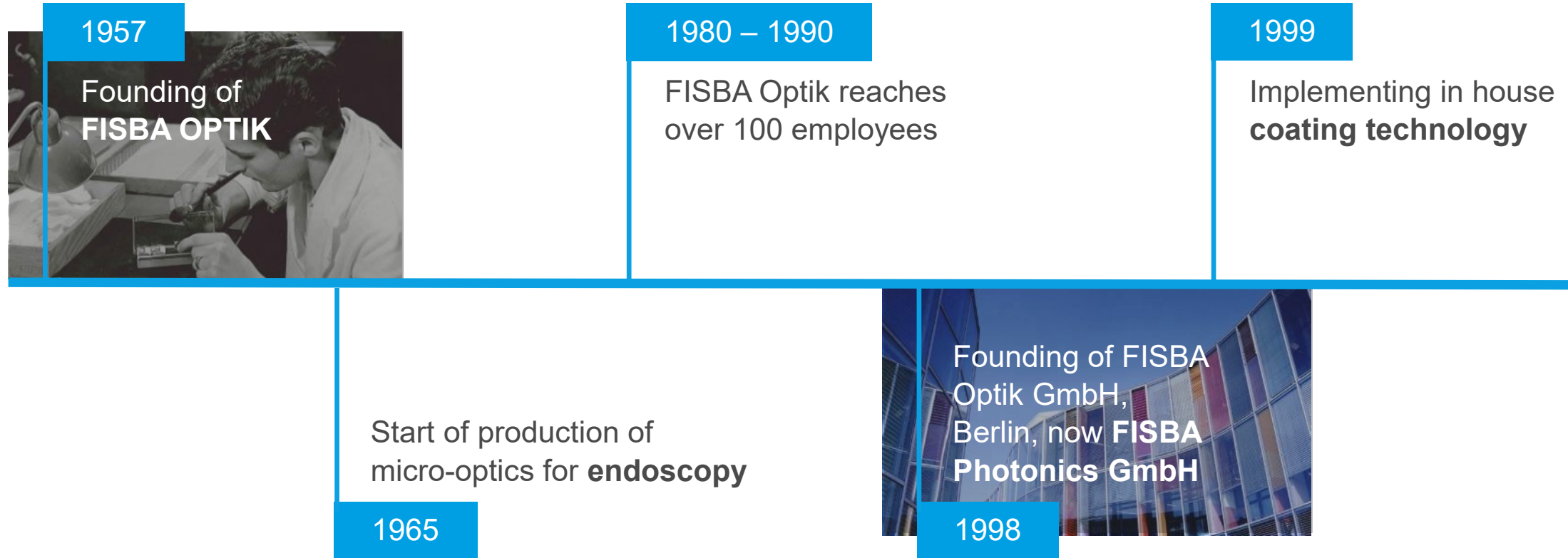
# Corporate Presentation

# Our company

- Founded in 1957
- Privately owned
- Approx. 360 employees around the world, thereof 30 apprentices
- Revenue > CHF 65 Mio.

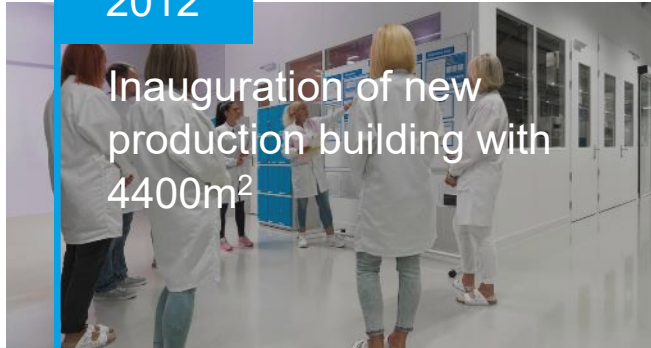


# History



# History

2012



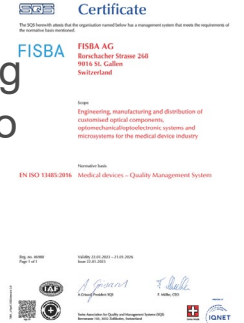
Inauguration of new production building with 4400m<sup>2</sup>

2015

FISBA OPTIK AG changes company name to **FISBA AG**

2023

Implementing ISO 13485 to **FISBA AG**



Formation of **FISBA LLC**, Tucson AZ Sales office and production facility

2014

Opening of the sales office **FISBA Shanghai**

2020



# What we focus on

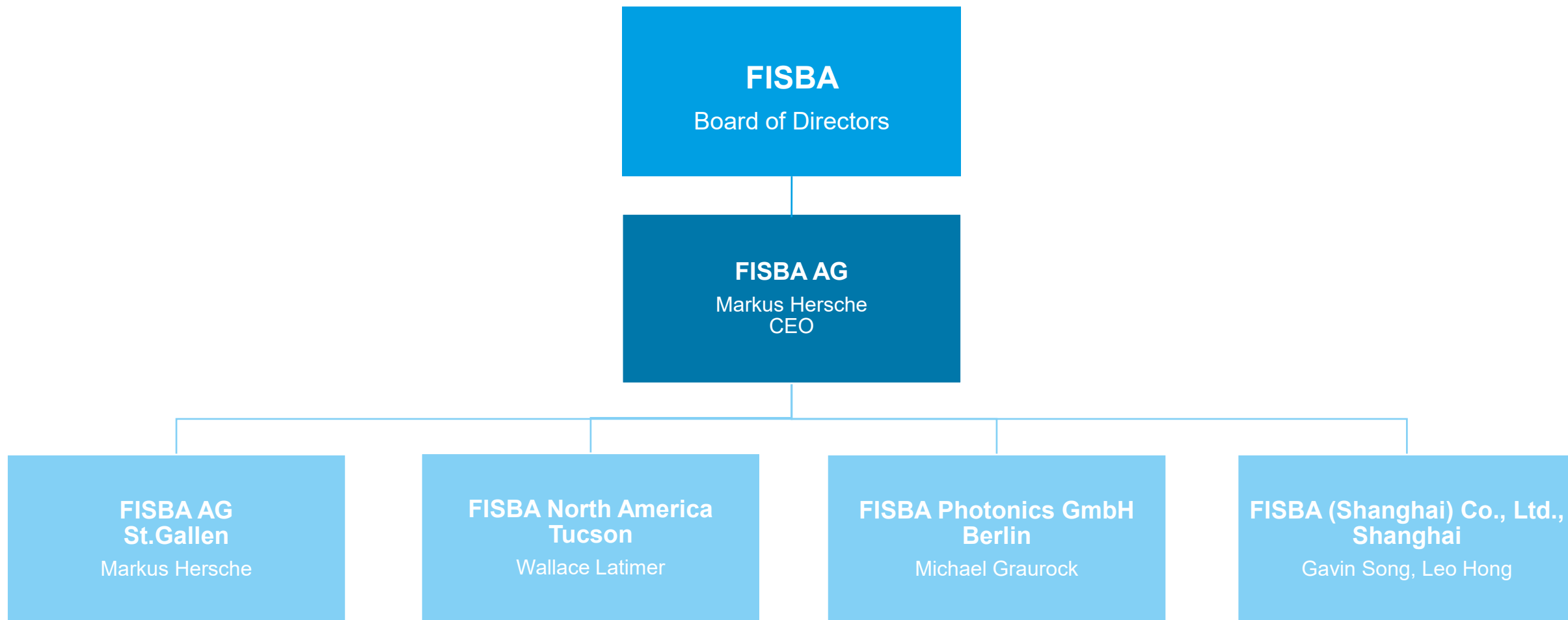
FISBA is a market leader in optical components and customized optical systems. We develop innovative glass technologies for shaping and delivering light.

## Our 4 key competencies are

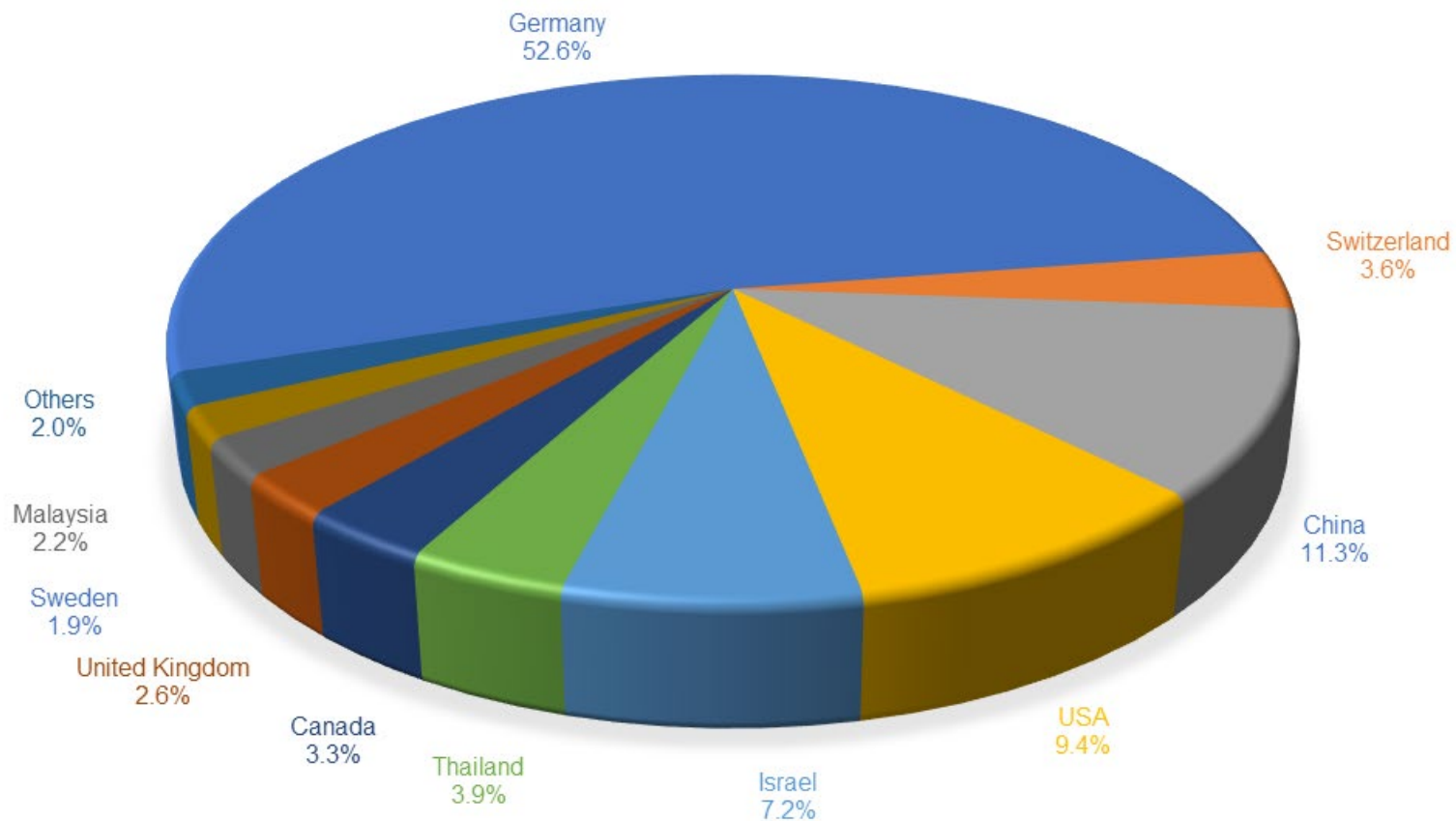
- Optical design and System Engineering
- High precision glass forming and molding
- Manufacturing of miniaturized optics including high precision micro assembly
- Coating



# The FISBA Group



# Top 10 export countries



Comment: ~ CHF 4 Mio. annual investments ; Revenue 2022; Consolidated figures



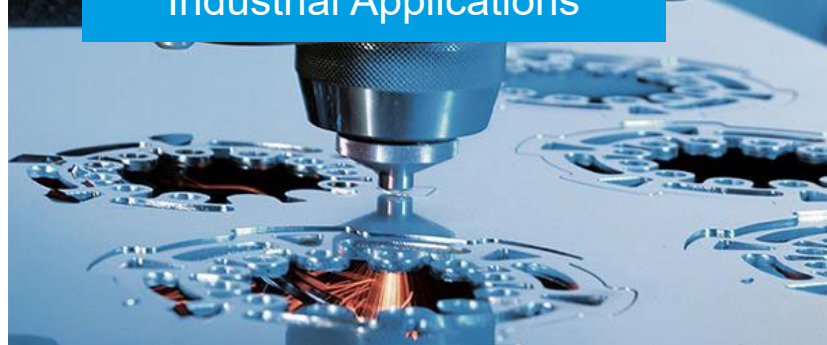
# Markets

## Life Science



- Endoscopy / Inside Imaging
- Diagnostics and Therapy
- Minimal Invasive Surgery
- Microscopy
- Flow Cytometry
- Surface Imaging
- Biotechnology
- Analytics and Process monitoring

## Industrial Applications



- Laser Material Processing
- Production
- Imaging
- Metrology

## Aerospace & Defense



- Surveillance and Image Intelligence
- Target Acquisition and Designation
- Information Display and Augmented Reality
- Electro-optical Guidance and Control



# Our products and solutions



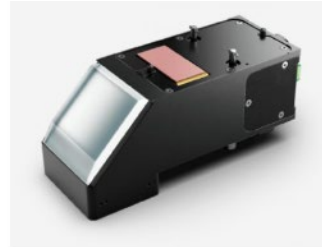
Micro Vision Systems



Imaging Optics



Laser Beam  
Shaping Optics



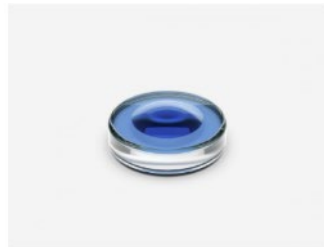
Customized Photonics  
System



Micro Laser Modules



READYBeam™



Precision-molded  
Glass Optics



Flat Optics



Micro Lenses for  
Imaging Systems



Slow Axis Collimator  
Lenses (SACs)



Fast Axis Collimator  
Lenses (FACs) on  
bottom tabs



Fast Axis Collimator  
(FACs)

# Our Service portfolio

What we can offer.

## Built-to-print

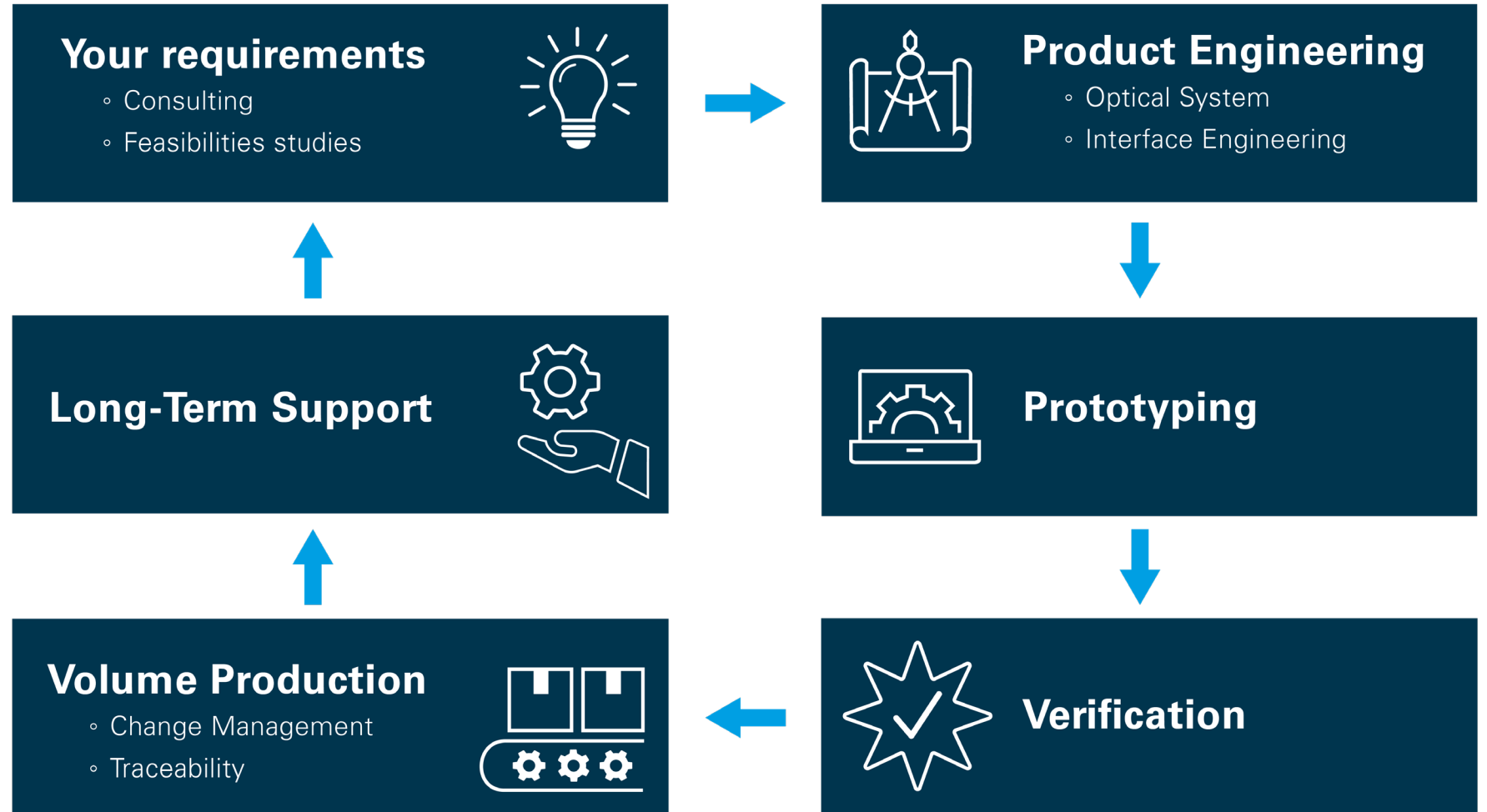
Customer does have their own drawings and is looking for a “job shop” to make these parts.

## Built-to-spec

The customer has their own optical specification, has no drawings or bill of material etc. and is looking for engineering support and manufacturing capabilities.

## Built-to-idea

Customer does have the “idea” and is looking for engineering support and manufacturing capability for the entire package.



THANK YOU