

BLUE DIODE LASER OPTICS



HIGH ABSORPTION MATERIAL PROCESSING

- 3D printing
- Welding: copper & aluminum

CONSUMER APPLICATION

- Blue laser engraving & cutting

LIGHTING

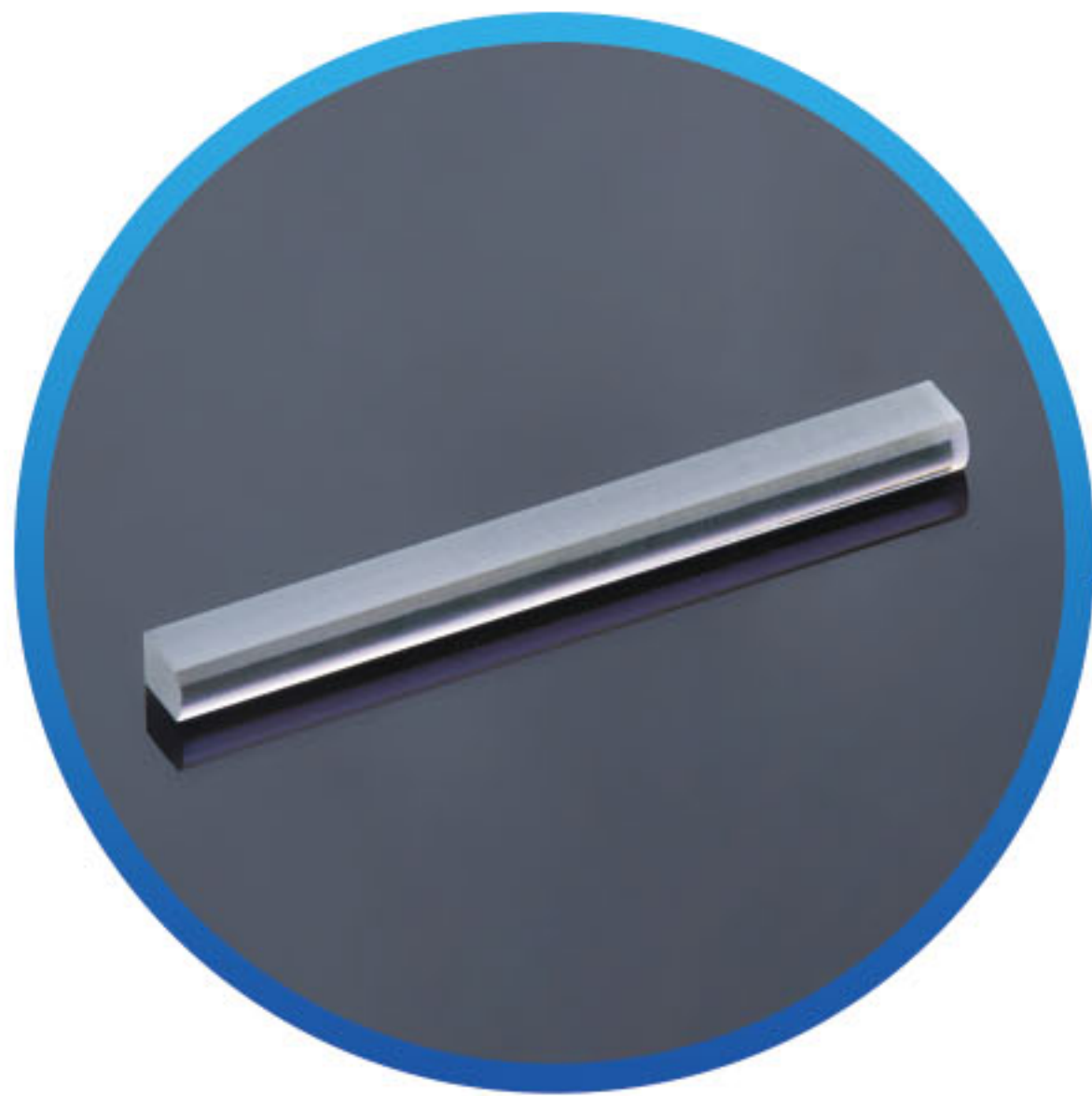
- Lighting via phosphors
- Laser projector

PUMPING SOURCE

- Pr:YLF and Ti:Sa

MEDICAL

- Bacterial treatment
- Surgery



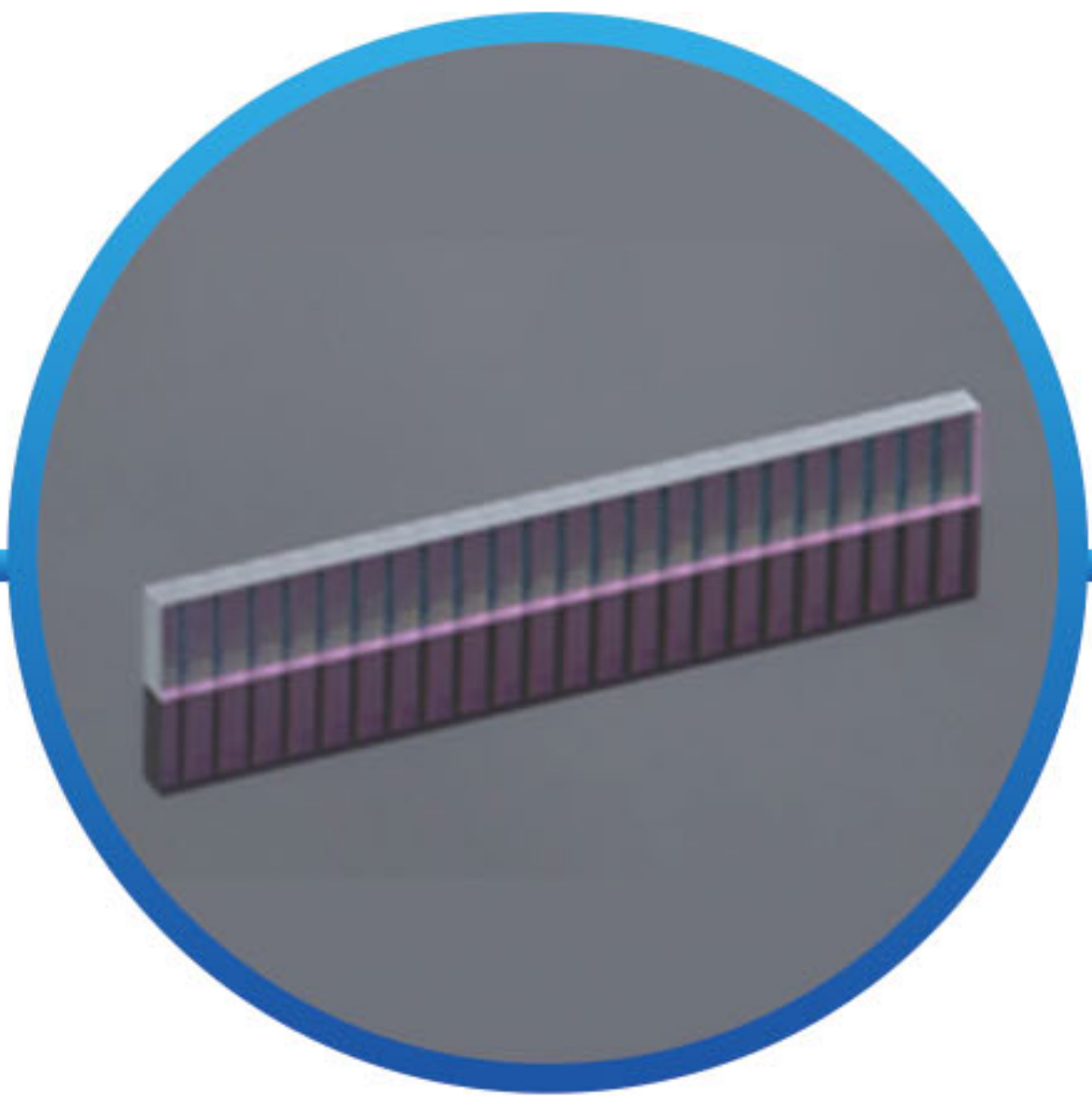
Blue FAC

Acylindrical plano-convex/biconvex fast axis collimator for the collimation of the fast axis of blue high-power diode lasers, with effective focal length of 160μm, 300μm, 570μm or customized EFL.



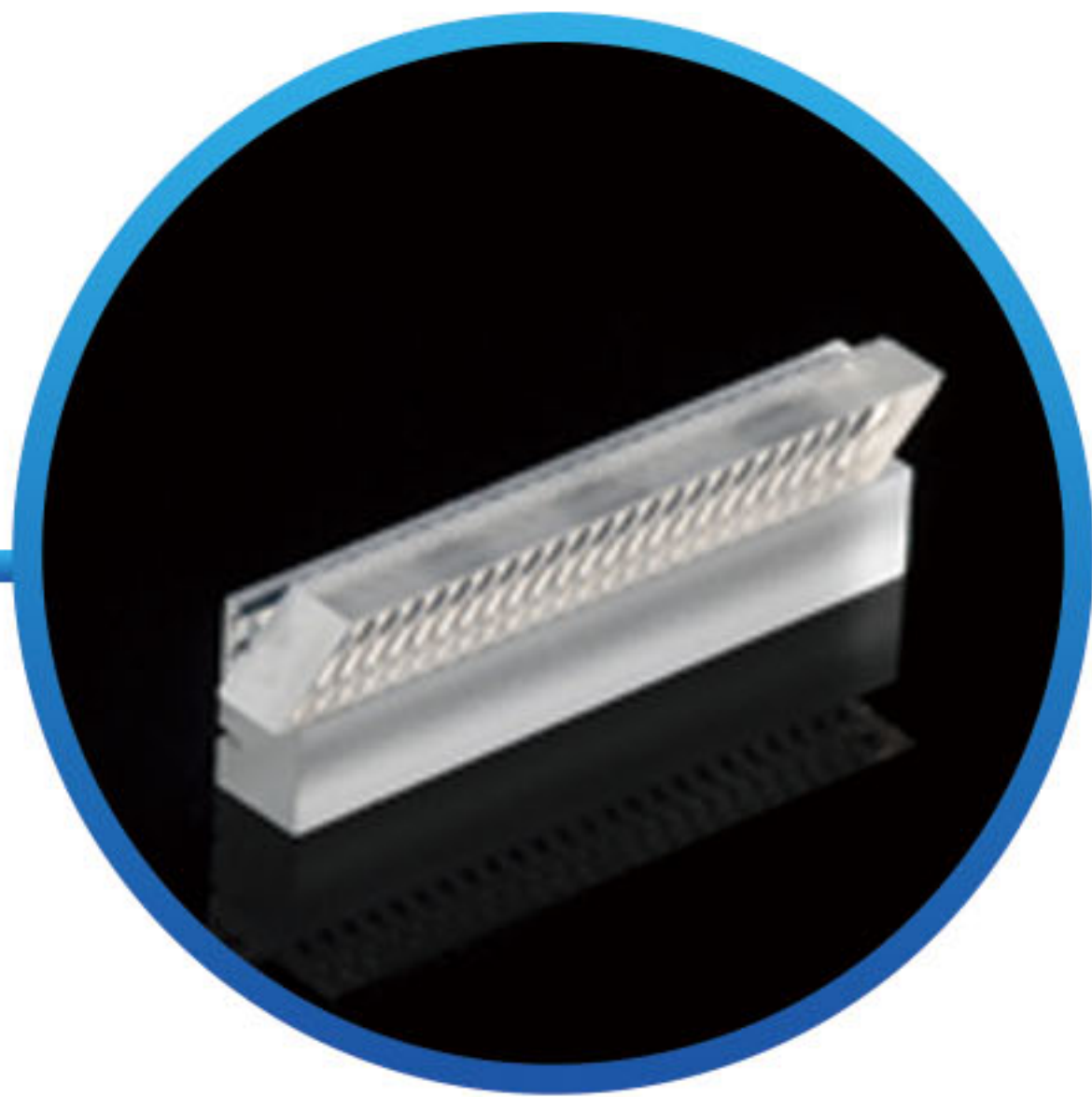
Blue meniscus SAC

Concave-convex, acylindrical lens design for the collimation of the slow axis of blue high-power diode lasers, bringing benefits for compact modules with limited space



Fused silica lens arrays

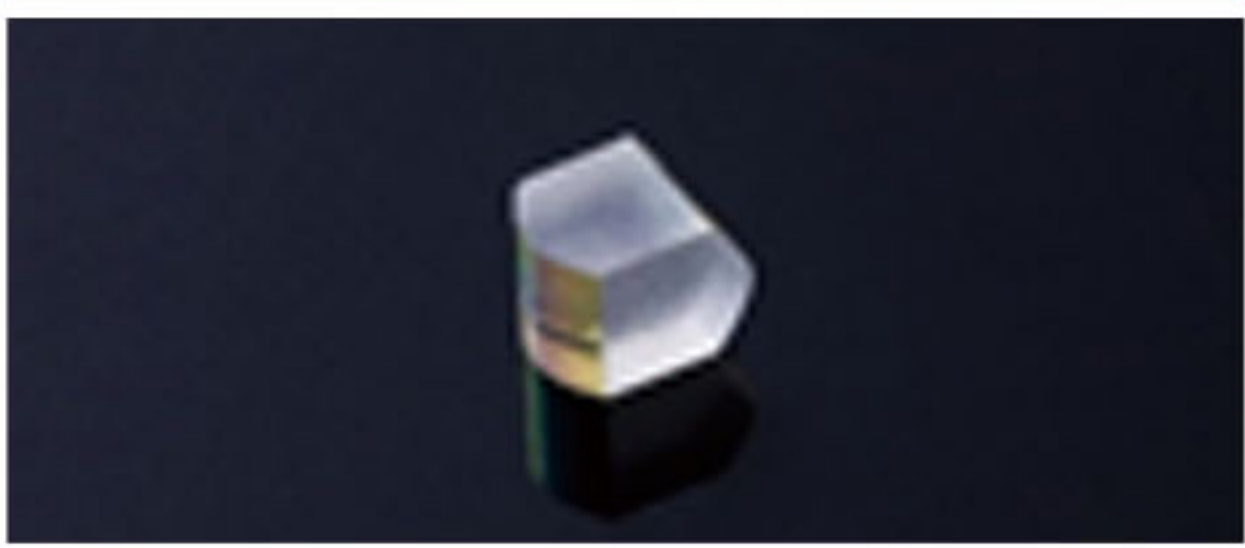

Fused silica lens arrays for the collimation of the slow axis of high-power blue diode laser bars with a standard or customized pitch available



Fused silica BTS

Beam transform system (BTS) converts the asymmetrical beam parameter product (BPP) in slow and fast axis into a more symmetrical BPP by stacking the emitters spatially

Monolithic Collimator/ Fiber Coupler for Blue TO-CAN Laser

	Product	PN	EFL (mm)
	Collimator	ZLE002061	1.19 (FA), 5.02 (SA)
	Fiber Coupler	ZLE000420	1.047 (FA), 1.752 (SA)

COMPANY INTRODUCTION

Founded in 2007 and headquartered in Xi'an, China, Focuslight Technologies Inc. is a fast-growing company that develops and manufactures high-power diode laser components and materials (photon generation), laser optics (photon control) as well as photonic application modules, assemblies, and sub-systems (photonics application solutions) with a focus on automotive, pan-semiconductor, and medical & health application solutions. Focuslight has over 400 patents worldwide and is ISO 14001, ISO 45001, ISO 9001:2015, and IATF 16949 certified. In December 2021, Focuslight announced the IPO on the Shanghai Stock Exchange (Ticker Symbol: 688167).