

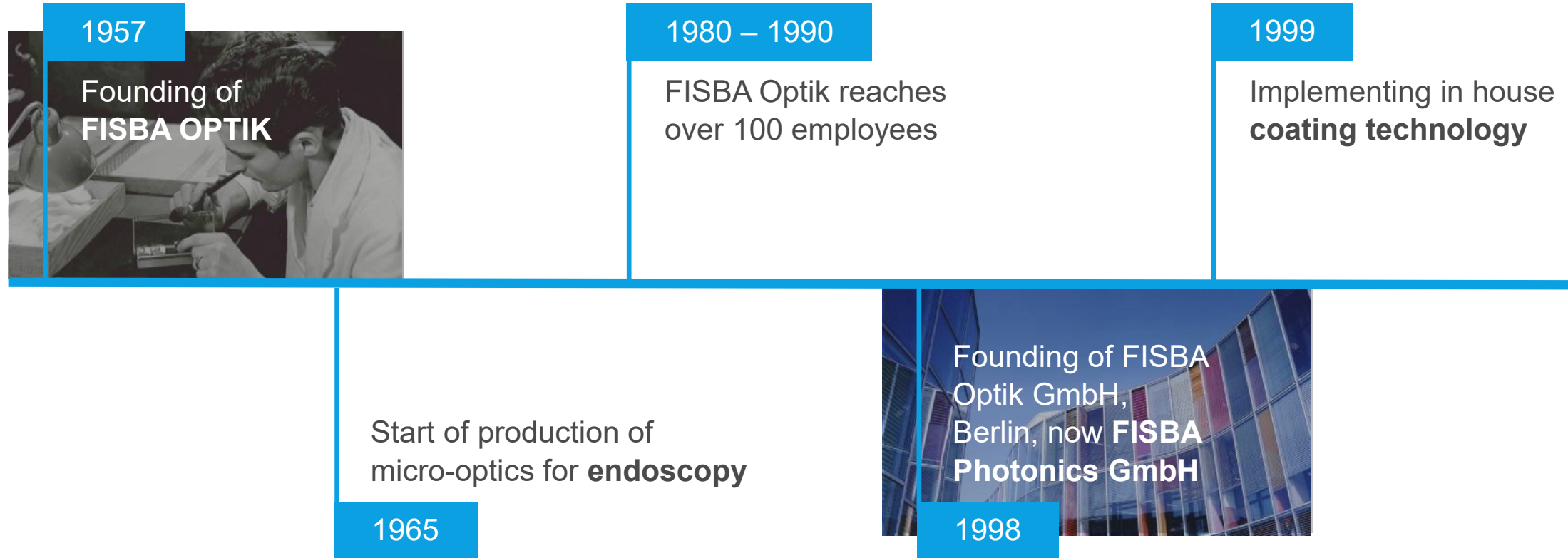
Corporate Presentation

Our company

- Founded in 1957
- Privately owned
- Approx. 360 employees around the world, thereof 30 apprentices
- Revenue > CHF 65 Mio.

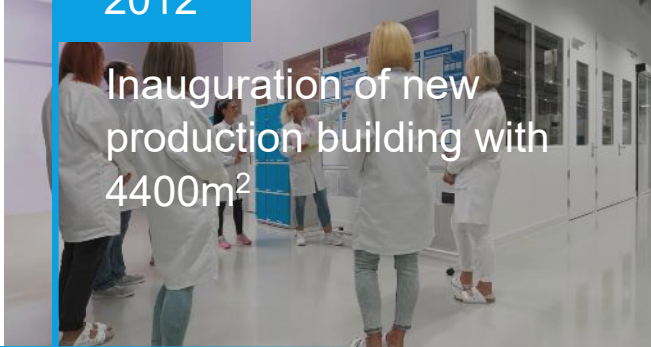


History



History

2012



Inauguration of new production building with 4400m²

2015

FISBA OPTIK AG changes company name to **FISBA AG**

Formation of **FISBA LLC**, Tucson AZ Sales office and production facility

2014

Opening of the sales office **FISBA Shanghai**

2020



What we focus on

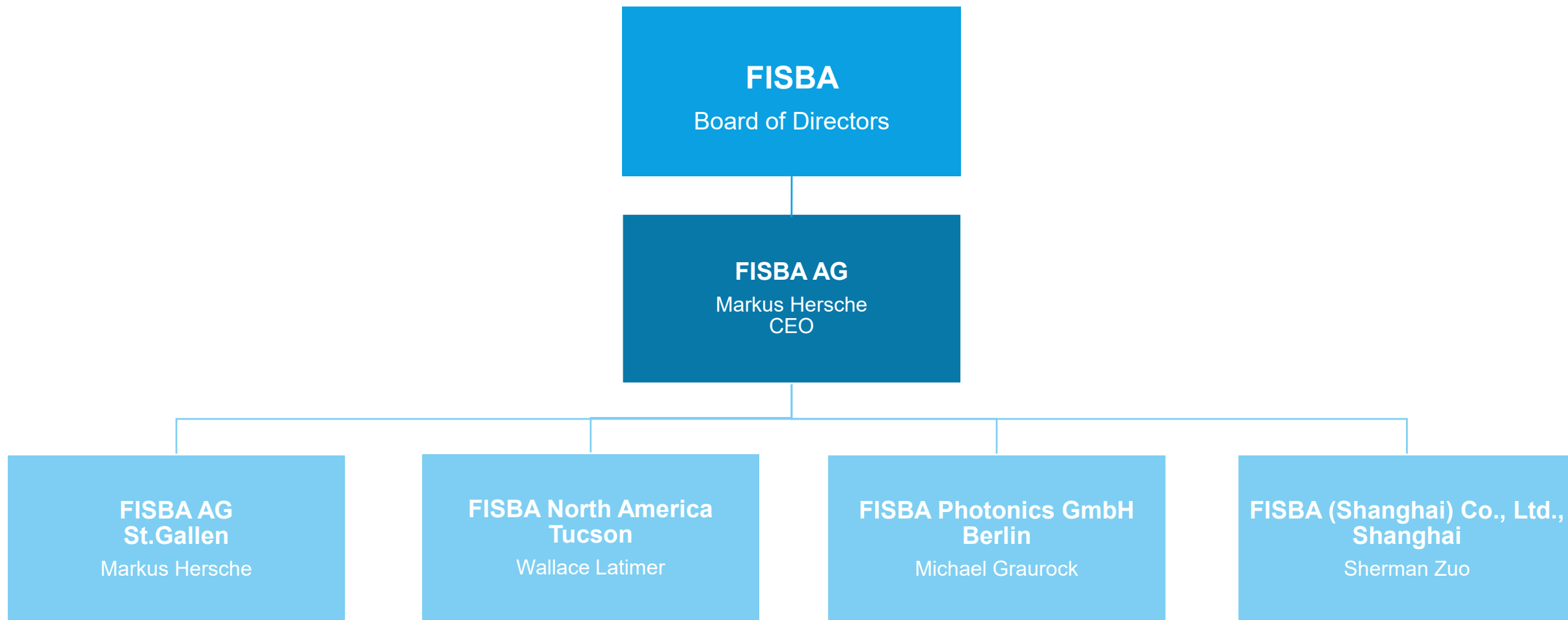
FISBA is a market leader in optical components and customized optical systems. We develop innovative glass technologies for shaping and delivering light.

Our 4 key competencies are

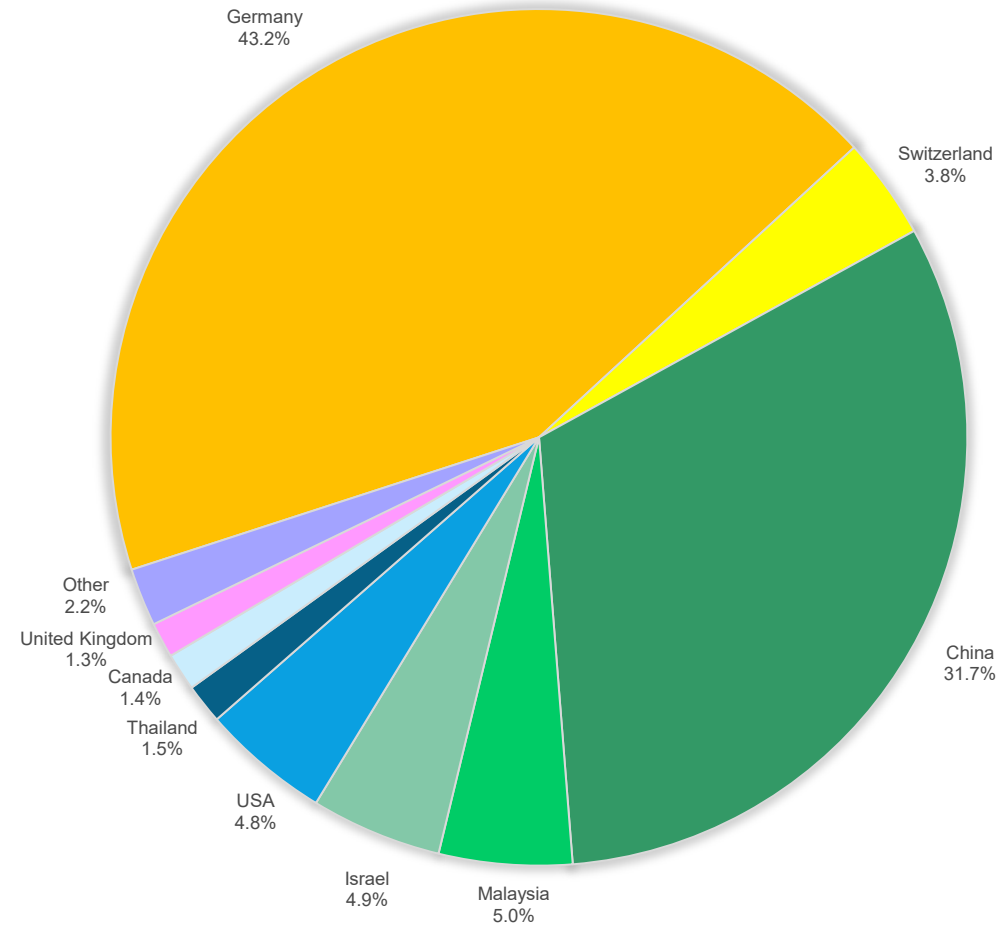
- Optical design and System Engineering
- High precision glass forming and molding
- Manufacturing of miniaturized optics including high precision micro assembly
- Coating



The FISBA Group



Top 10 export countries



Sources: ~ CHF 4 Mio. annual investments ; Revenue 2021; Consolidated figures; FISBA Qlik-Report: <http://srvbi01.fisba.intern/sense/app/9e0e2755-3b32-489b-b30c-f1d40faa40cb/sheet/HqJUAU/state/analysis>

Markets

Life Science



- Endoscopy / Inside Imaging
- Diagnostics and Therapy
- Minimal Invasive Surgery
- Microscopy
- Flow Cytometry
- Surface Imaging
- Biotechnology
- Analytics and Process monitoring

Industrial Applications



- Laser Material Processing
- Production
- Imaging
- Metrology

Aerospace & Defense



- Surveillance and Image Intelligence
- Target Acquisition and Designation
- Information Display and Augmented Reality
- Electro-optical Guidance and Control

Our products and solutions



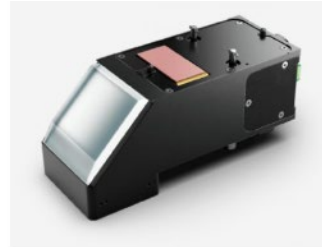
Micro Vision Systems



Imaging Optics



Laser Beam
Shaping Optics



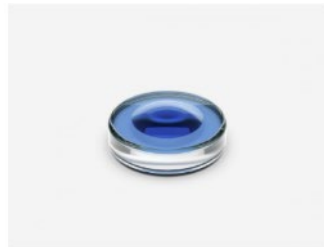
Customized Photonics
System



Micro Laser Modules



READYBeam™



Precision-molded
Glass Optics



Flat Optics



Micro Lenses for
Imaging Systems



Slow Axis Collimator
Lenses (SACs)



Fast Axis Collimator
Lenses (FACs) on
bottom tabs



Fast Axis Collimator
(FACs)

Our Service portfolio

What we can offer.

Built-to-print

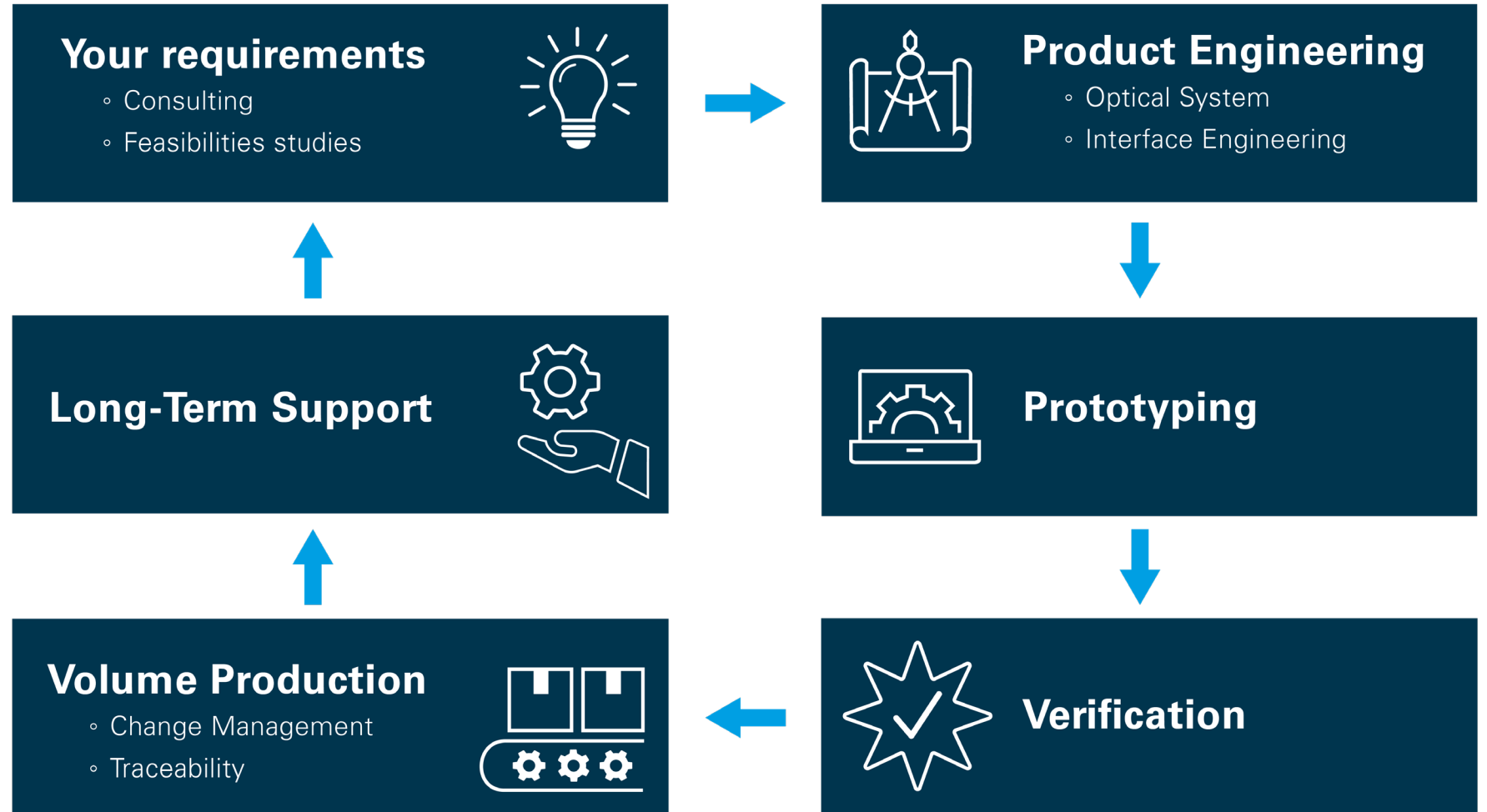
Customer does have their own drawings and is looking for a “job shop” to make these parts.

Built-to-spec

The customer has their own optical specification, has no drawings or bill of material etc. and is looking for engineering support and manufacturing capabilities.

Built-to-idea

Customer does have the “idea” and is looking for engineering support and manufacturing capability for the entire package.



THANK YOU